

MONTHLY MEMBERSHIP PROGRESS REPORT

District 2 X3

Results as of: 4/30/2026

GMT:

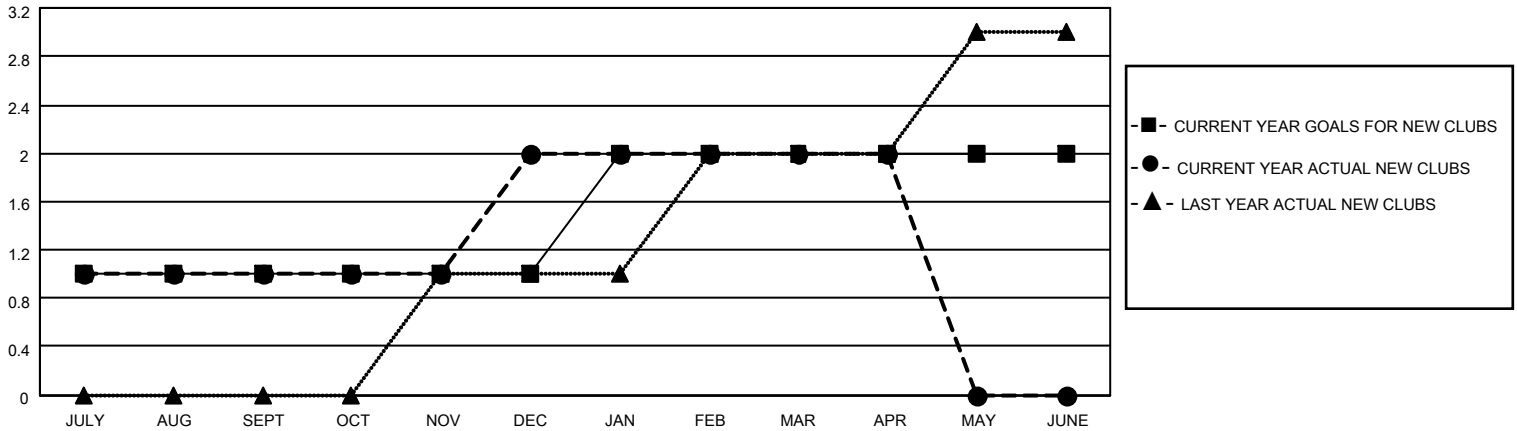
LOCATION TEXAS

GMT CA

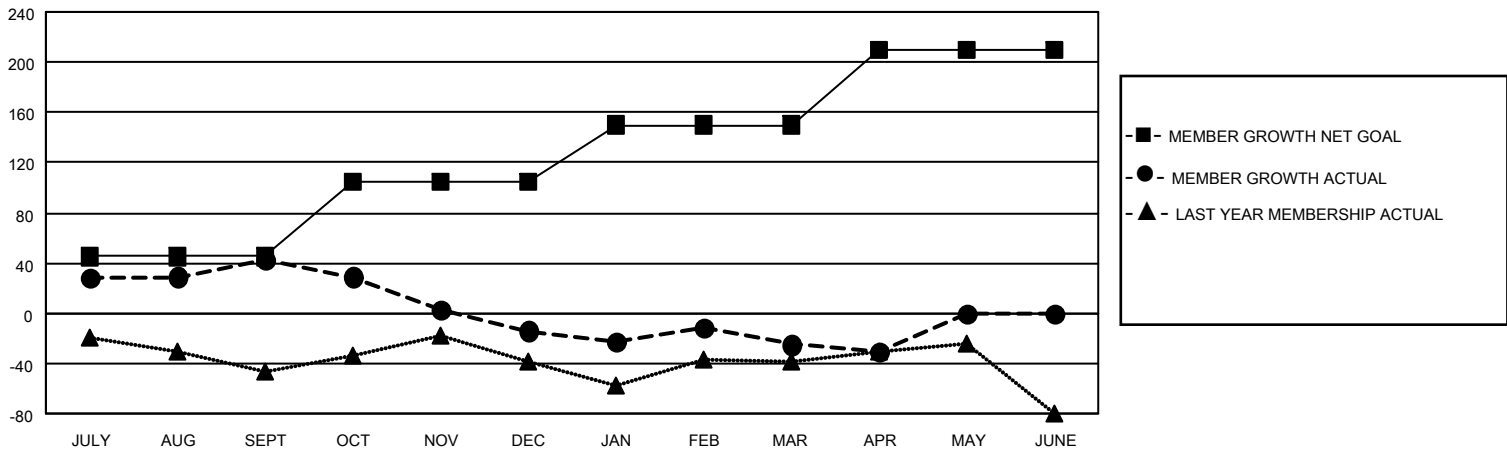
Clubs			
RESULTS FOR 2025-2026			
QUARTER	NEW CLUB GOAL	NEW CLUBS	DROPPED CLUBS
JULY/AUG/SEPT	1	1	0
OCT/NOV/DEC	0	1	0
JAN/FEB/MAR	1	0	0
APR/MAY/JUNE	0	0	0

Members			
RESULTS FOR 2025-2026			
QUARTER	MEMBER GROWTH NET GOAL	MEMBER GROWTH ACTUAL	DROPPED MEMBERS ACTUAL (including transfers)
JULY/AUG/SEPT	45	79	35
OCT/NOV/DEC	60	49	99
JAN/FEB/MAR	45	48	50
APR/MAY/JUNE	60	9	11

GOALS AND ACTUAL NEW CLUBS CUMULATIVE



GOALS AND ACTUAL MEMBERS CUMULATIVE



DROPPED CLUBS: 0	32 CLUBS OF 54 ADDED 1 OR MORE NEW MEMBERS	<u>GENDER DISTRIBUTION</u>	
		MALE	771 (59.72%)
<u>DROPPED MEMBERS</u>		FEMALE	519 (40.20%)
DECEASED	9	TOTAL FAMILY UNIT MEMBERS	
CLUB CANCELLED	0	161	
OTHER	186	FAMILY MEMBERS PAYING HALF DUES	
TOTAL	195	84	

[CLICK HERE FOR CUMULATIVE MEMBERSHIP DATA](#)